



SUNNY BOY SMART ENERGY

SBSE3.6-50 / SBSE4.0-50 / SBSE5.0-50 / SBSE6.0-50

1

optional
Sunny Home Manager 2.0 / SMA Energy Meter
BATTERY

2

IP65
17.5 kg
90°...80°
+60 °C
-25 °C
max. 3000 m

3

406.4
273.5
203.2
203.2
36.8
103.1
30
133.6
500
233
mm

568
260.3
39.7
485.8
39.7
500
mm

min 2x

3

17.5 kg

4

RCD TypA ≥ 30 mA

2.5 to 10 mm²
PE
N
L
Temp.: 90 °C
Ø 10 to 25 mm
18 mm

4

7, 8, 9, 10, 11, 12, 13, 14 optional

crimp
TX25
2,5 Nm

	SBSE3.6-50	SBSE4.0-50	SBSE5.0-50	SBSE6.0-50
P _{AC} (@ 230 V, 50 Hz)	3.6 kW	4.0 kW	5.0 kW	6.0 kW
S (@ cos φ = 1)	3.6 kVA	4.0 kVA	5.0 kVA	6.0 kVA

4

	SBSE3.6-50	SBSE4.0-50	SBSE5.0-50	SBSE6.0-50
V _{AC,r}	230 V / 240 V			
V _{AC,range}	184 V to 253 V / 192 V to 264 V			
I _{AC,max} (@ 230 V)	15.7 A	17.4 A	21.8 A	26.1 A
I _{AC,max} (@ 240 V)	15.0 A	16.7 A	20.9 A	25 A
f _{AC}	50 Hz / 60 Hz			
cos φ	0.8 overexcited to 0.8 underexcited			

5

optional

2.5 to 4 mm²
2.5 mm²
0.75 to 1.5 mm²
Temp.: ≥90 °C

0.75 to 1.5 mm²
Temp.: ≥90 °C

1, 2, 3, 4

PE
N
L
PZ2
>2.5 Nm

5

optional

0.75 to 1.5 mm²
Temp.: ≥90 °C

4, 5, 6, 7, 8, 9, 10

SPS
LAN2
LAN1
click

6

SUNNY BOY SMART ENERGY ROUTER
LAN1

SUNNY HOME MANAGER 2.0 / SMA ENERGY METER
LAN2

Cable type: 100BaseTx
Min. CAT5e, RJ45 ends
Shielded
UV resist for outdoor
max. 50 m

1, 2, 3, 4, 5, 6

7

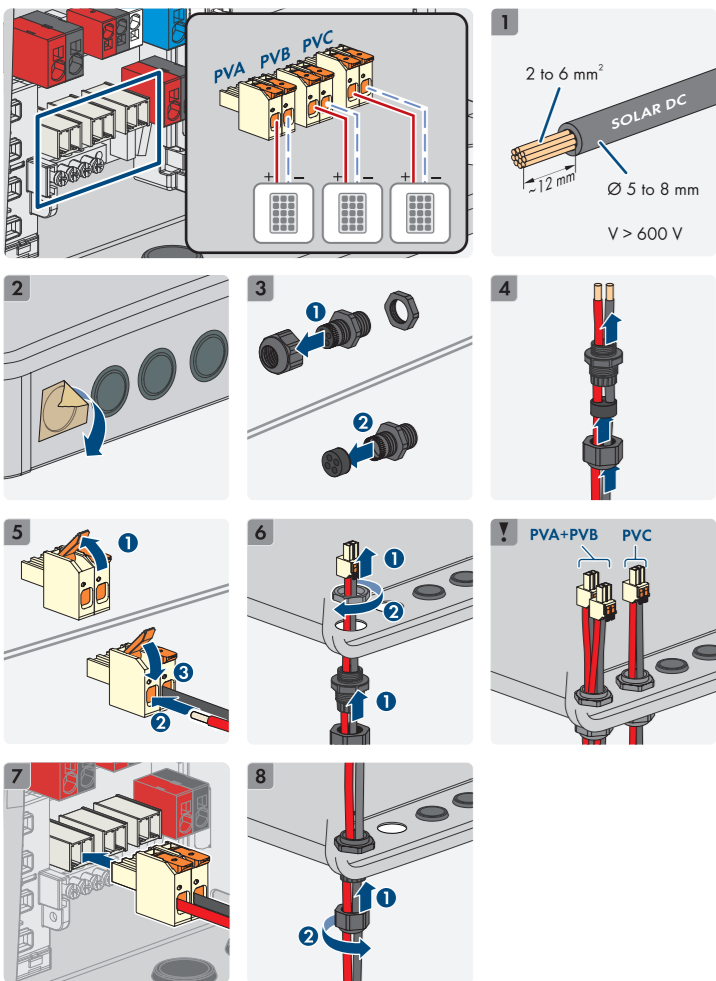
optional

BATTERY
SUNNY BOY SMART ENERGY

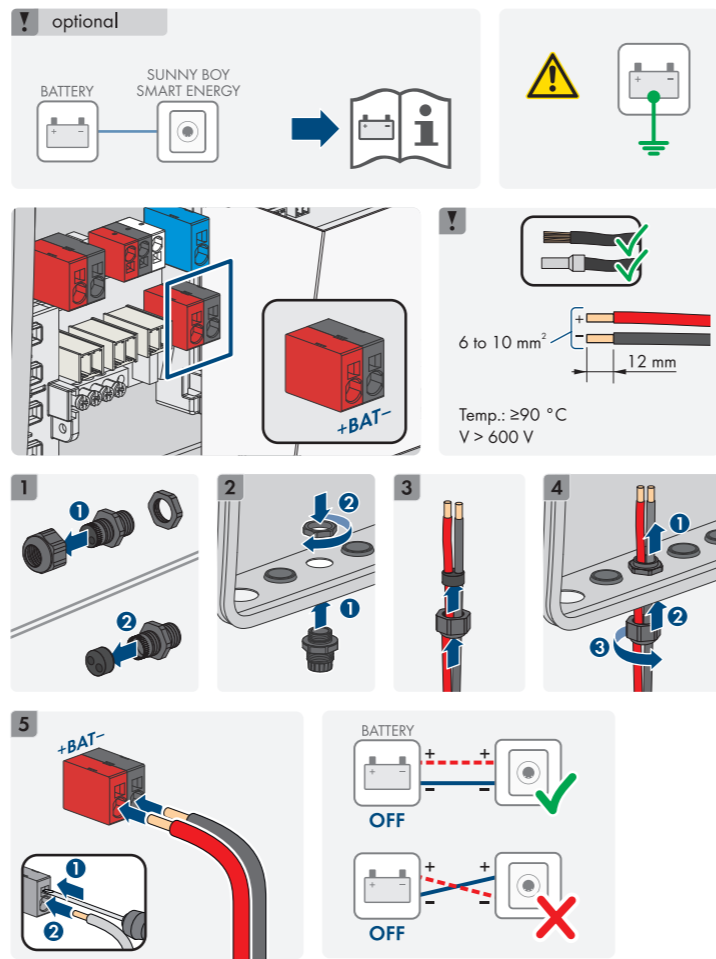
Cable type: 100BaseTx
Min. CAT5e, RJ45 ends
Shielded
UV resist for outdoor
max. 50 m

BAT_EN
CAN_L
CAN_H
EN_GND

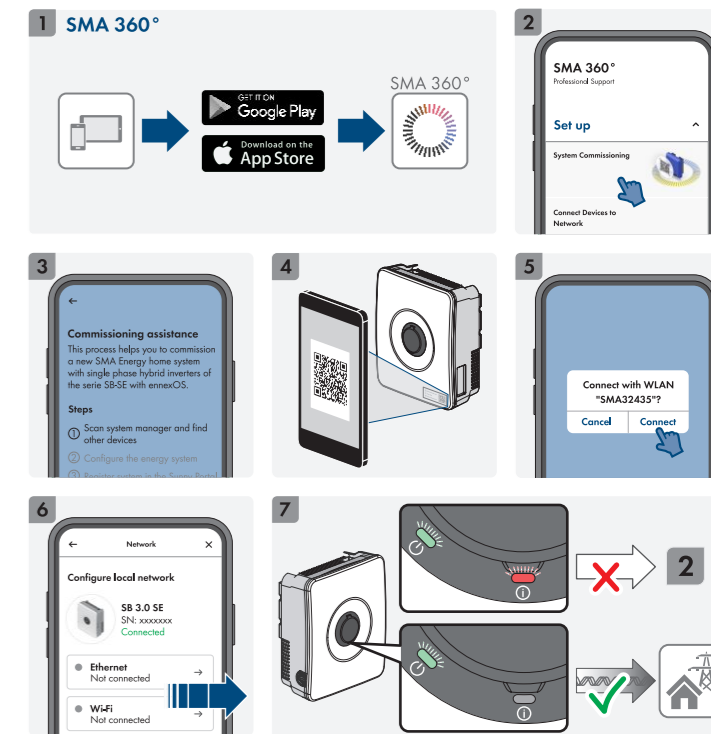
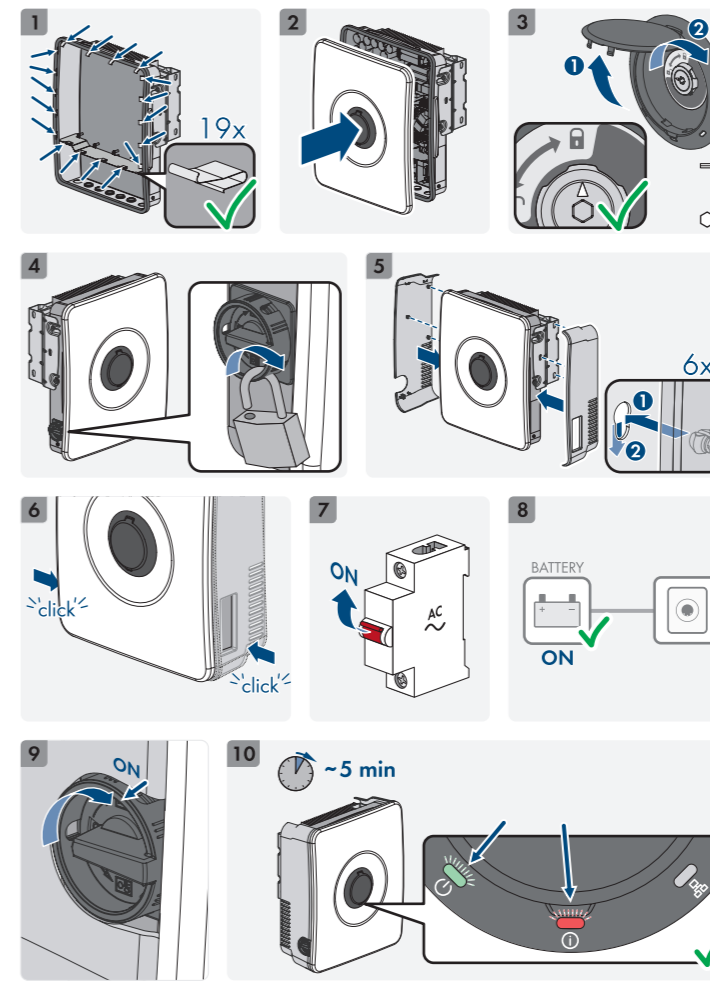
1, 2, 3, 4, 5



	SBSE3.6 -50	SBSE4.0 -50	SBSE5.0 -50	SBSE6.0 -50
Max. generator power	7200 Wp	8000 Wp	10000 Wp	12000 Wp
$V_{DC, max}$	600 V			
$V_{DC, MFP}$	60 V to 480 V			
$I_{DC, max}$ usable input A / B / C	15 A			
$I_{SC PV}$ max, input A / B / C	30 A			
$I_{SC PV}$ max, all inputs	60 A			



Type	Li-ion battery
$V_{DC, max}$	500 V
$V_{DC, min}$	90 V
$I_{DC, max}$	30 A



Topology	no galvanic isolation
Overvoltage category in accordance with IEC 60664-1	II (DC), III (AC)
Protection class in accordance with IEC 61140	I
All-pole sensitive residual-current monitoring unit	integrated
Maximum permissible value for relative humidity, condensing	100 %
Extended humidity range according to IEC 60721-3-4	0 % to 100 %
Pollution degree inside the enclosure	2
Pollution degree outside the enclosure	3



<https://go.sma.de/service>